



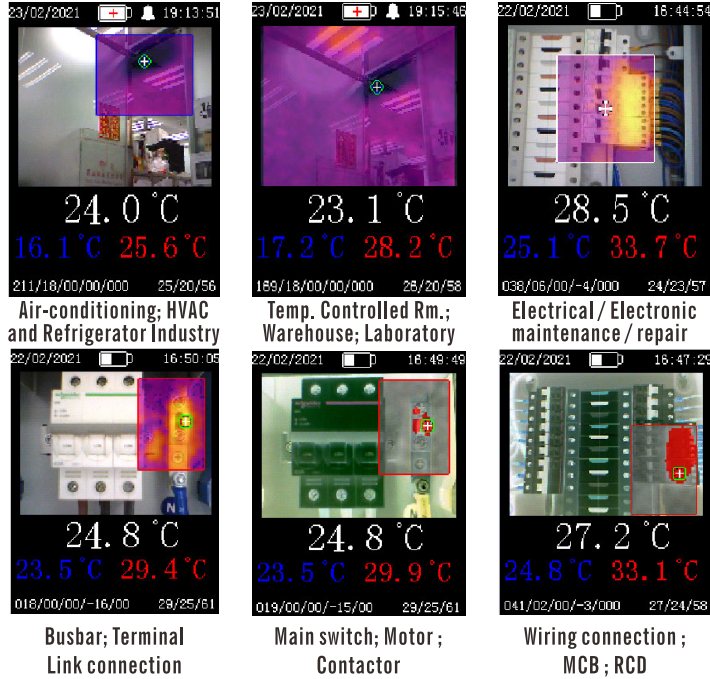
Handheld Thermal Camera with Data Logger

(Auto Trace Hot / Cold Object Temperatures)

Introduction

Wireless Connectivity Thermal Camera MS-WITC8C / MS-WITC8CL is designed for use in wide applications such as for Electrical distribution board; Temperature controlled room; Water flows inside basement; Water leaks under roof / ceiling / walls / ground floor inside plant room; warehouse etc.

One of the most advance features of MS-WITC8C / MS-WITC8CL is real time sharing and storing data measured with picture through hot spot of Smartphone or WiFi router connection.



Air-conditioning; HVAC and Refrigerator Industry

Temp. Controlled Rm.; Warehouse; Laboratory

Electrical / Electronic maintenance/ repair

Busbar; Terminal Link connection

Main switch; Motor; Contactor

Wiring connection; MCB; RCD

SPECIFICATIONS

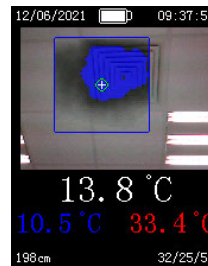
Model No.:	MS-WITC8C	MS-WITC8CL
Real time snap and store data measured with picture through hot spot of Smartphone or WiFi router connection		*
Laser pointer for alarm indication		*
- Display - Date / Time	2-inch TFT Colour Display (220x176)	
Digital visual camera enhancement	640 x 480	
Thermal image detector	Low power CMOS, shutterless	
Thermal image resolution	80(H) x 62(V), 4960 pixels	
Spectral response	8 - 14 μm (Thermal LWIR)	
Measure object temperature range / Resolution (min.)	-20°C ~ 1000°C (-4°F ~ 1832°F) / 0.1°C (°F)	
Distance to object measurement display (1cm ~ 320cm)		*
Menu setting and display		
Ambient temperature and humidity display : -20°C (-4°F) ~ > 60°C (140°F) / 20% ~ 99%RH		
Auto trace 'Hot' or 'Cold' temp. area with / without thermal in picture; max. temp. icon indication and data display		
Auto trace Max. + Min. and target temp. display		
Target pointer (center) temp. display		
Auto trace 'Hot' or 'Cold' temp. with Red or Blue isotherm display at grey palette		
Alarm set, auto trace high or low temp. with beep and or laser pointer trigger (for MS-WITC8CL)		
Remotely selectable function mode through Smartphone / Tablet / PC		
Data logging, auto trace and capture high or low temp. every 60 seconds, and stored in micro SD card		
Adjustable emissivity : 0.1~0.99		
Self Temperature Compensation adjust by manually input for accurate / comparison or matching reading		
Fixed focus distance : 0.5M		
Color palette : White Hot / Fulgurite / Rainbow / IronRed / (Red/Blue) isotherm map on grey or visual display		
Low battery and charging status display		
Image frequency : ≤9Hz		
Image storage / File format : Micro SD card (not include, up to 32G) / BMP		
1/4" screw for tripod		
Operating conditions / Storage conditions	0°C to 40°C (32°F to 104°F) ; 10% to 80%RH	
Type "C" USB input for charging or continuous operation, 5V, DC / 1A		
Battery type and operating duration	Rechargeable 3.7V / 1100 mAH polymer battery included, (continuous operating approx. 90 minutes)	
Dimensions (LxWxD)mm (approx.)	185 x 115 x 52	
Weight (approx.) grams	180	190

- Features and specifications are subject to change without prior notice.

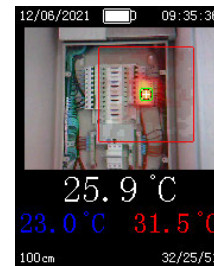
Model No.: MS-WITC8C
MS-WITC8CL



• Auto Trace Temp.



Auto trace Cold or Hot object temperatures



Auto trace Hot object temperature, such as MCB, Wiring; contactor etc.

[MS-WITC8CL](#)



Fault finding of Loose connection inside the switch



Precisely find heat map in a circuit, such as in Link / Busbar connection

• Auto Trace Water Leaks



Auto trace water leaks, under ceiling; walls; ground floor; basement.

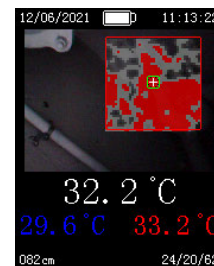


Data Logging, Auto trace and capture water leaks (high temp.) every 60 seconds and stored in micro SD card

• Data Logger



Data Logging, Auto trace and capture water leaks (low temp.) every 60 seconds and stored in micro SD card



Data Logging, Auto trace and capture water leaks (high temp.) every 60 seconds and stored in micro SD card



YouTube
MEET International LTD



meet.com.hk



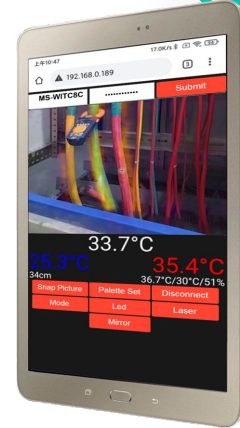
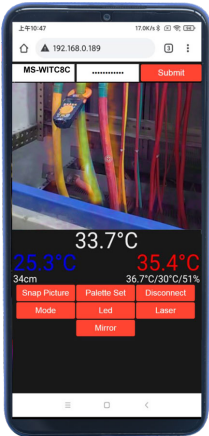
Handheld Thermal Camera with Data Logger (Auto Trace Hot / Cold Object Temperatures)

Real time snap and store picture with data measured through hot spot of Smartphone or WiFi router connection by PC / Tablet / Smartphone

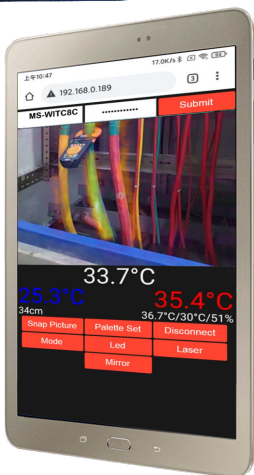
MS-WITC8C/L



Full information display on screen and able to remotely control function mode

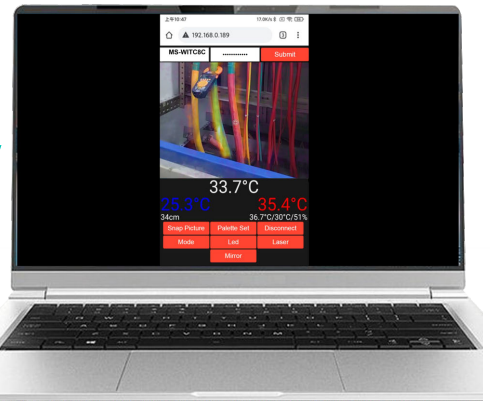


Full information display on screen and able to remotely control function mode



Full information display on screen and able to remotely control function mode

Full information display on screen and able to remotely control function mode



MANUFACTURER AND EXPORTER
美特國際有限公司 MEET INTERNATIONAL LTD.

香港九龍觀塘鴻圖道26號威登中心19樓1901室

Flat 1901, 19/F., Westin Centre, 26 Hung To Road, Kwun Tong, Kowloon, Hong Kong

Tel : (852) 2950 4689

E-mail : sales@meet.com.hk

Website : www.meet.com.hk

www.globalsources.com/meetintl.co

http://meetusa.en.alibaba.com

Copyright © 2021 Meet International Ltd. All rights reserved



meet.com.hk